

WILLOUGHBY PLAT NO. 16, A P.U.D.(r) (WILLOUGHBY GLEN)

Being a part of an abandoned portion of Stuart Farms
as recorded in Plat Book 1, Page 63, public records,
Martin County, Florida,

CLERK'S RECORDING CERTIFICATE

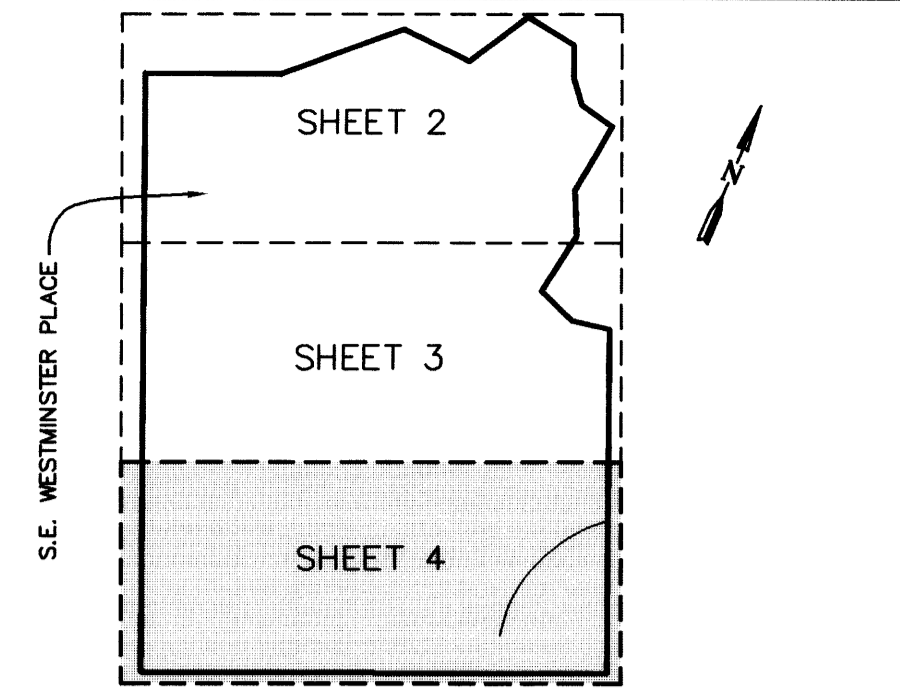
I, MARSHA STILLER, CLERK OF THE CIRCUIT COURT OF MARTIN COUNTY, FLORIDA, HEREBY CERTIFY THAT THIS PLAT WAS FILED FOR RECORD IN

PLAT BOOK 14, PAGE 84,
MARTIN COUNTY, FLORIDA, PUBLIC RECORDS THIS

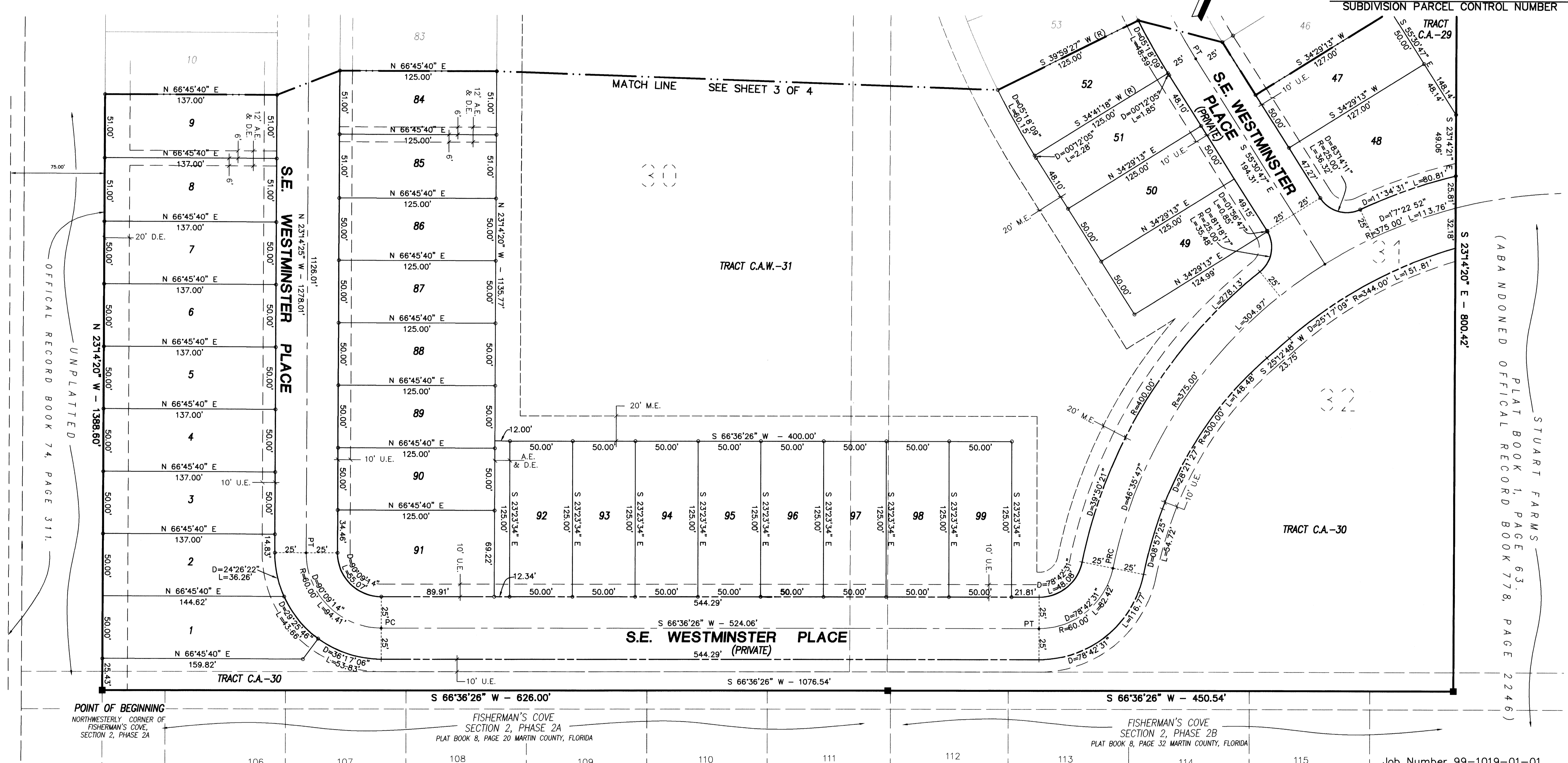
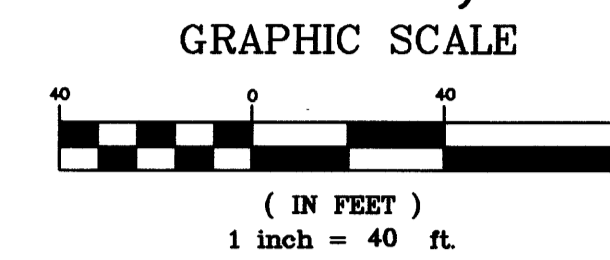
8 DAY OF December, 1999.

MARSHA STILLER, CLERK OF THE CIRCUIT COURT
MARTIN COUNTY, FLORIDA.

FILE NUMBER 1405143 BY *POA D. D. D.*
DEPUTY CLERK



SHEET INDEX



POINT OF BEGINNING
NORTHWESTERLY CORNER OF
FISHERMAN'S COVE,
SECTION 2, PHASE 2A

FISHERMAN'S COVE
SECTION 2, PHASE 2A
PLAT BOOK 8, PAGE 20 MARTIN COUNTY, FLORIDA

FISHERMAN'S COVE
SECTION 2, PHASE 2B
PLAT BOOK 8, PAGE 32 MARTIN COUNTY, FLORIDA

Job Number 99-1019-01-01
Licensed Business #4108

LEGEND	
•	= SET PERMANENT CONTROL POINT (PCP) PARKER KALON NAIL & WASHER LABELED "GCY LB 4108"
○	= SET 3/4" IRON PIPE WITH YELLOW CAP LABELED "GCY, INC. LB 4108"
■	= SET PERMANENT REFERENCE MONUMENT (PRM) 4"x4" CONCRETE MONUMENT WITH DISK LABELED "GCY INC. P.R.M. LB 4108, PSM 4864"
Δ	= DELTA (CENTRAL ANGLE)
L	= ARC LENGTH
R	= RADIUS
CB	= CHORD BEARING
A.E.	= ACCESS EASEMENT (PRIVATE)
C.A.	= COMMON AREA
C.A.W.	= COMMON AREA WATER
D.E.	= DRAINAGE EASEMENT (PRIVATE)
LB	= LICENSED BUSINESS
M.E.	= MAINTENANCE EASEMENT
P.C.	= POINT OF CURVATURE
P.R.C.	= POINT OF REVERSE CURVATURE
PSM	= PROFESSIONAL SURVEYOR AND MAPPER
P.T.	= POINT OF TANGENCY
P.U.D.	= PLANNED UNIT DEVELOPMENT
(R)	= RADIAL LINE
U.E.	= UTILITY EASEMENT

- SURVEYOR'S NOTES**
- THIS PLAT, AS RECORDED IN ITS ORIGINAL FORM IN THE PUBLIC RECORDS, IS THE OFFICIAL DEPICTION OF THE SUBDIVIDED LANDS DESCRIBED HEREON AND WILL IN NO CIRCUMSTANCES BE SUPPLANTED IN AUTHORITY BY ANY OTHER FORM OF THE PLAT, WHETHER GRAPHIC OR DIGITAL.
 - THERE MAY BE ADDITIONAL RESTRICTIONS THAT ARE NOT RECORDED ON THIS PLAT THAT MAY BE FOUND IN THE PUBLIC RECORDS OF THIS COUNTY.
 - THERE SHALL BE NO BUILDING OR ANY OTHER KIND OF CONSTRUCTION, OR PLACEMENT OF TREES OR SHRUBS ON DRAINAGE EASEMENTS.
 - BEARINGS SHOWN HEREON ARE REFERENCED TO THE NORTH LINE OF FISHERMAN'S COVE SECTION 2, PHASE 2A, AS RECORDED IN PLAT BOOK 8, PAGE 20, PUBLIC RECORDS, MARTIN COUNTY, FLORIDA. SAID LINE BEARS SOUTH 66°36'26" WEST.

GCY
INCORPORATED
PROFESSIONAL SURVEYORS AND MAPPERS
1505 S.W. MARTIN HIGHWAY P.O. BOX 1469
PALM CITY, FLORIDA 34991 (561-286-8083)
CERTIFICATE OF AUTHORIZATION LB 4108